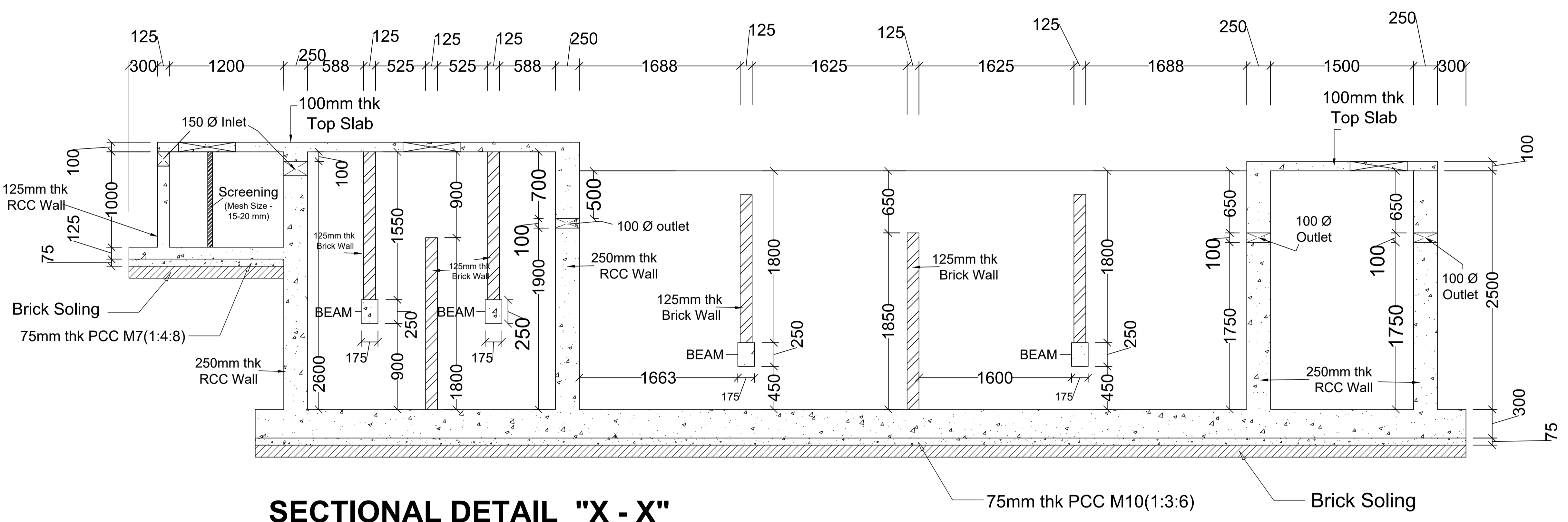
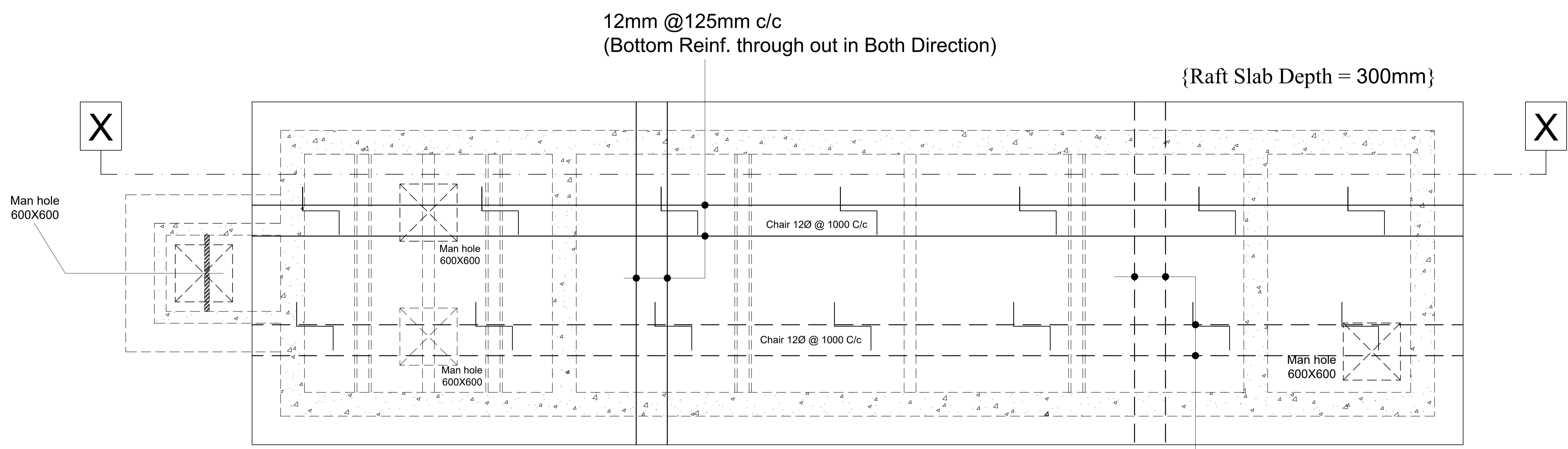


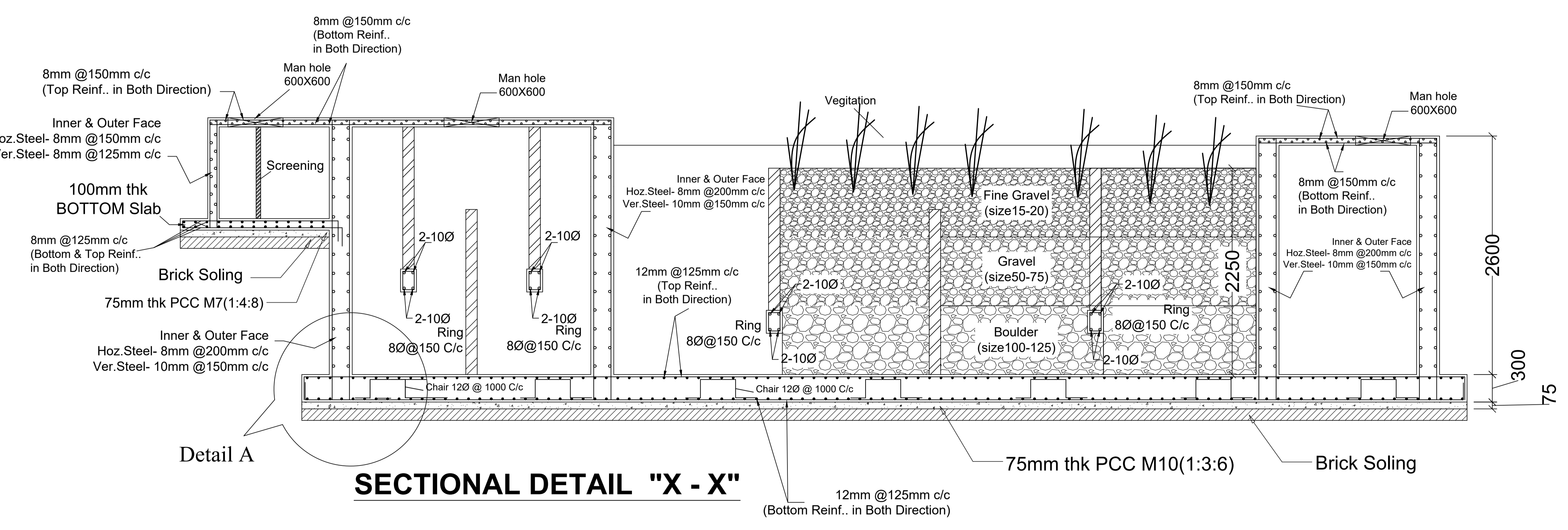
PLAN



SECTIONAL DETAIL "X - X"



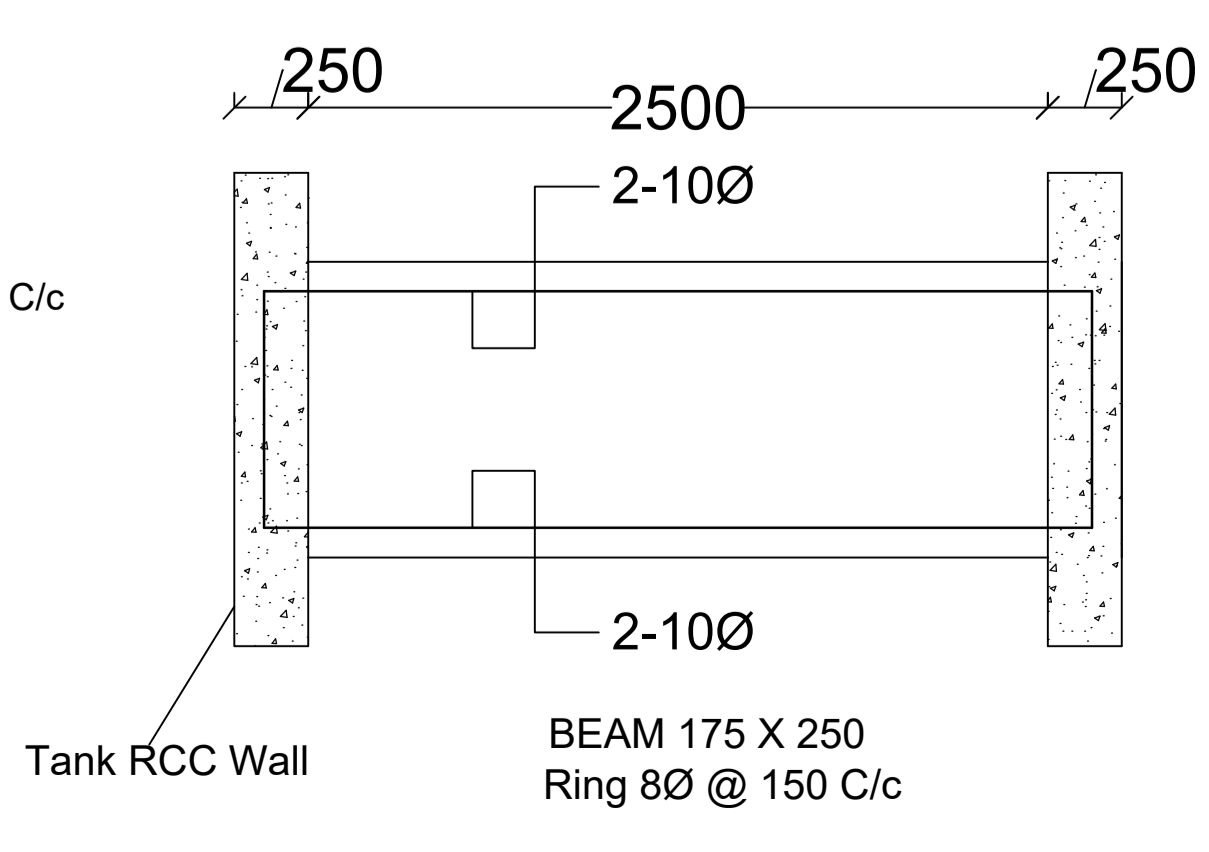
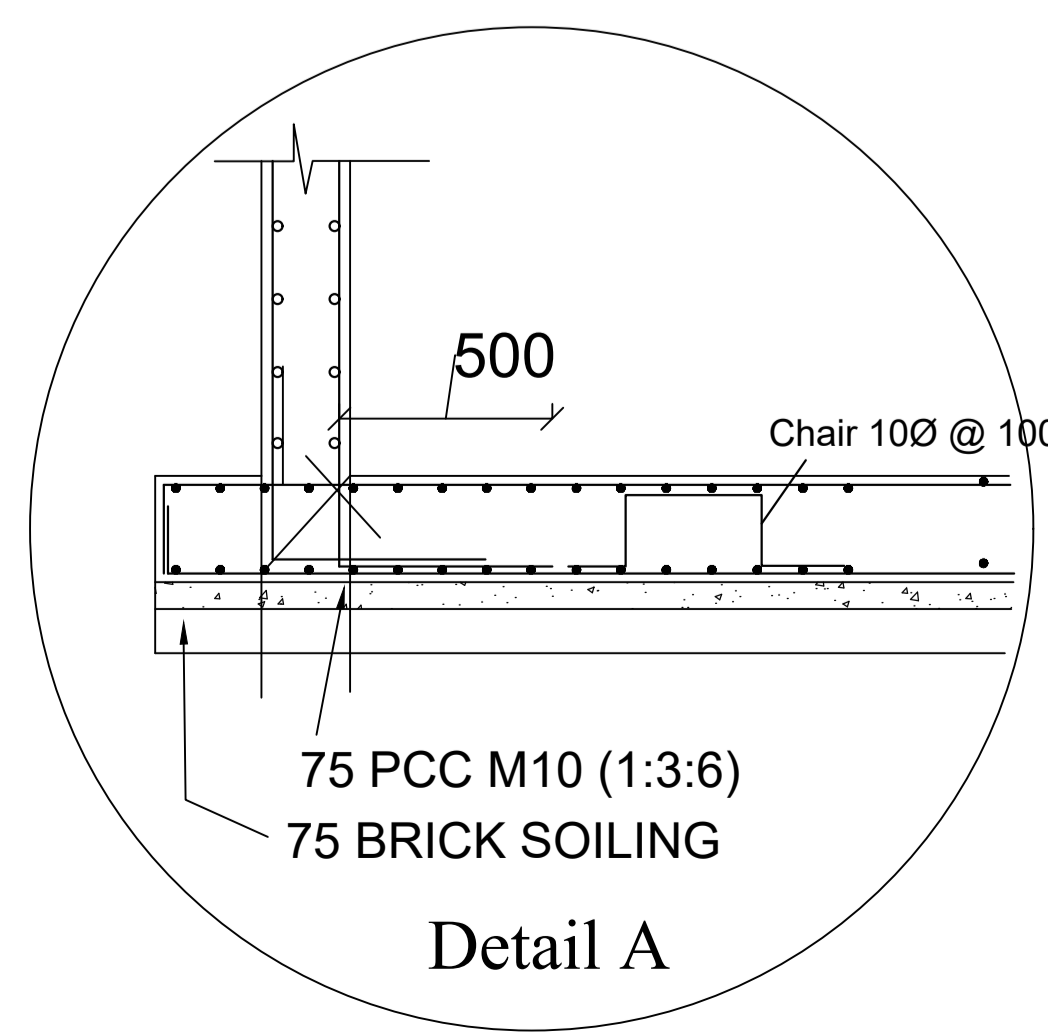
RAFT TOP & BOTTOM LAYER REINF. DETAILS



SECTIONAL DETAIL "X - X"

NOTE:-

01. ALL DIMENSION ARE IN MM NOTED OTHERWISE
02. ALL DIMENSION ARE TO BE READ NOT TO BE MEASURE
03. CLEAR COVER IN 250mm THICK RCC WALL AND RAFT =50 mm, IN 125 THICK RCC WALL, RAFT & BEAM = 30MM
4. LAP LENTGH = 50 X DIA OF TOR BAR
5. ALL CONC MIX M25
6. STEEL GRADE: Fe 500
7. RAFT DEPTH- 300MM



PROJECT:-	PHYTORID TREATMENT PLANT OF CAPACITY 22 KLD AT SAINIK SCHOOL, PURULIA.
SHEET TITLE:-	REINFORCEMENT DETAILS OF PHYTORID TREATMENT PLANT OF CAPACITY 22 KLD
DATE:-	03/02/2023
CONSULTANT:-	ALLWEE PROJECTS AND SOLUTIONS PRIVATE LIMITED, NAVI MUMBAI